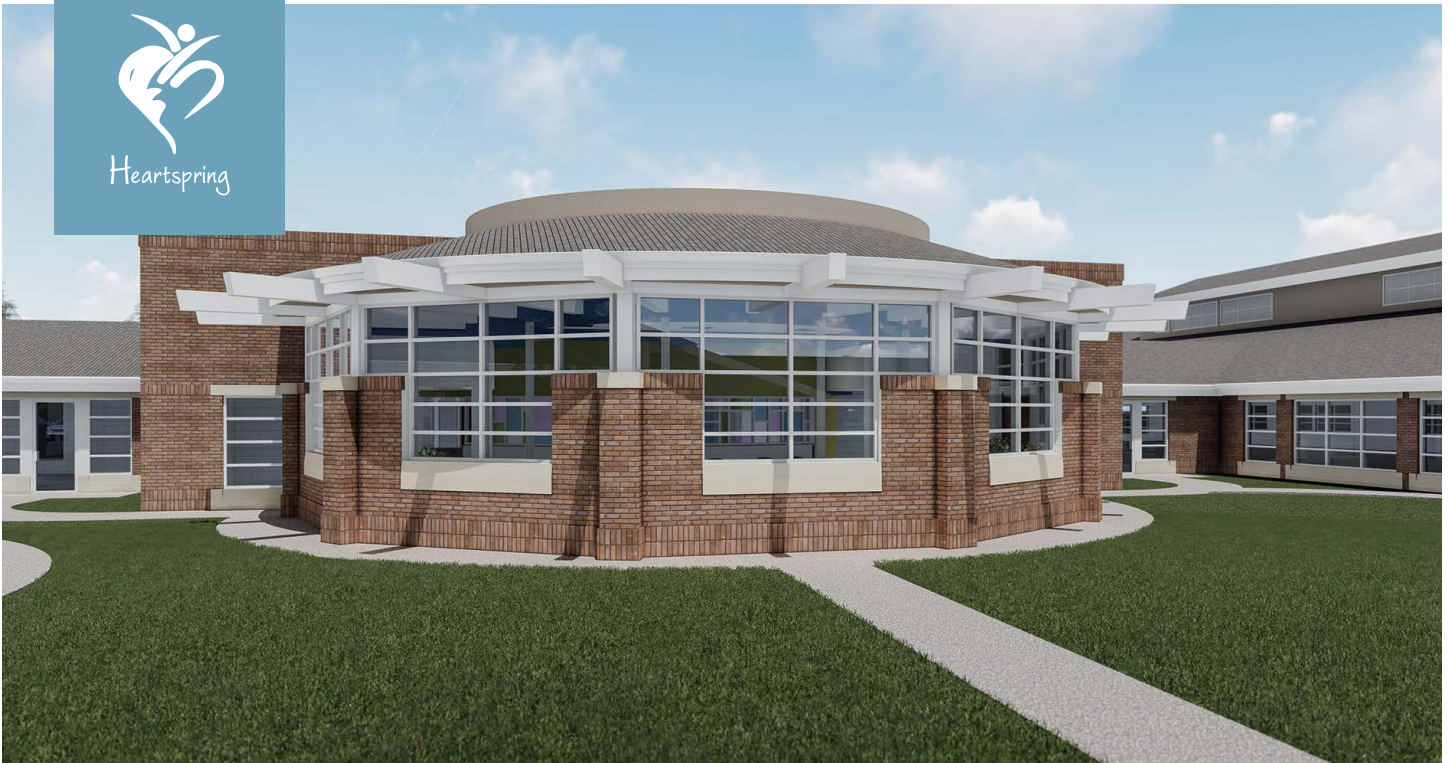




Heartspring



# EXPANDING POSSIBILITIES

HEARTSPRING CAMPUS EXPANSION PROJECT

Cafeteria Expansion & Remodel



# HEARTSPRING CAFETERIA

## EXPANSION & REMODEL

Our school campus was constructed in 1998. Since then, we've doubled the number of students we serve and increased the meal preparations from one meal a day to three meals a day going from 320 meals served a week to over 1,300 without adding any square footage to accommodate for growth.

Mealtime for our students is more than getting the food to fuel them through the day, it's also a valuable learning experience. The students acquire extremely important social and life skills like how to properly feed themselves, use utensils or ask food service employees for what they want.

The current space hinders this valuable learning process and creates safety issues while dining. The cafeteria is cramped, making it difficult for staff to consistently have easy access to our students in case of a behavior. Safety is a top priority at Heartspring, and we want to ensure when parents entrust us with their

loved ones, we are creating the safest environment possible. As we continue to grow to keep up with the demand for our services, we will have to expand our cafeteria to be able to feed the increased number of students.

Our cafeteria expansion and remodel gives us the opportunity to address some of these concerns. After the construction and remodel, we will be able to seat more people—increasing from 56 to 84 individuals at a time. We will move the middle partition to create a much more open floor plan to address our space and safety concerns. Staff will have line-of-sight of the entire cafeteria from anywhere in the space. Our food storage space will increase to meet the increase in the student population. Because we are able to use existing structures for most of the expansion, it will also be cost effective. The entire project, including furniture and equipment, is \$570,000.



## CAFETERIA OVERVIEW

---

Since the construction of our current campus in 1998, we've doubled the number of students we serve and increased the number of meals made from 320 a week to over 1,300 without adding any square footage to accommodate for the growth. Mealtime is a valuable time for students, is important in their overall health and is an opportunity to build important social and life skills. To better serve our current student population, we plan to expand our cafeteria and replace it with a streamlined design.

### **Cost-effective expansion**

- The student population has increased since the building's construction in 1998. To keep up with this increase, we will expand the cafeteria by 838 sq. ft to 3,270 sq ft.
- Seating will expand from 56 to 84 people. This allows cafeteria staff to feed more classrooms in a shorter period of time, keeping students on a normal, consistent dining schedule.
- To reduce costs, we will use our existing roofline and foundation, and we'll move the exterior wall out to meet where the current patio is.

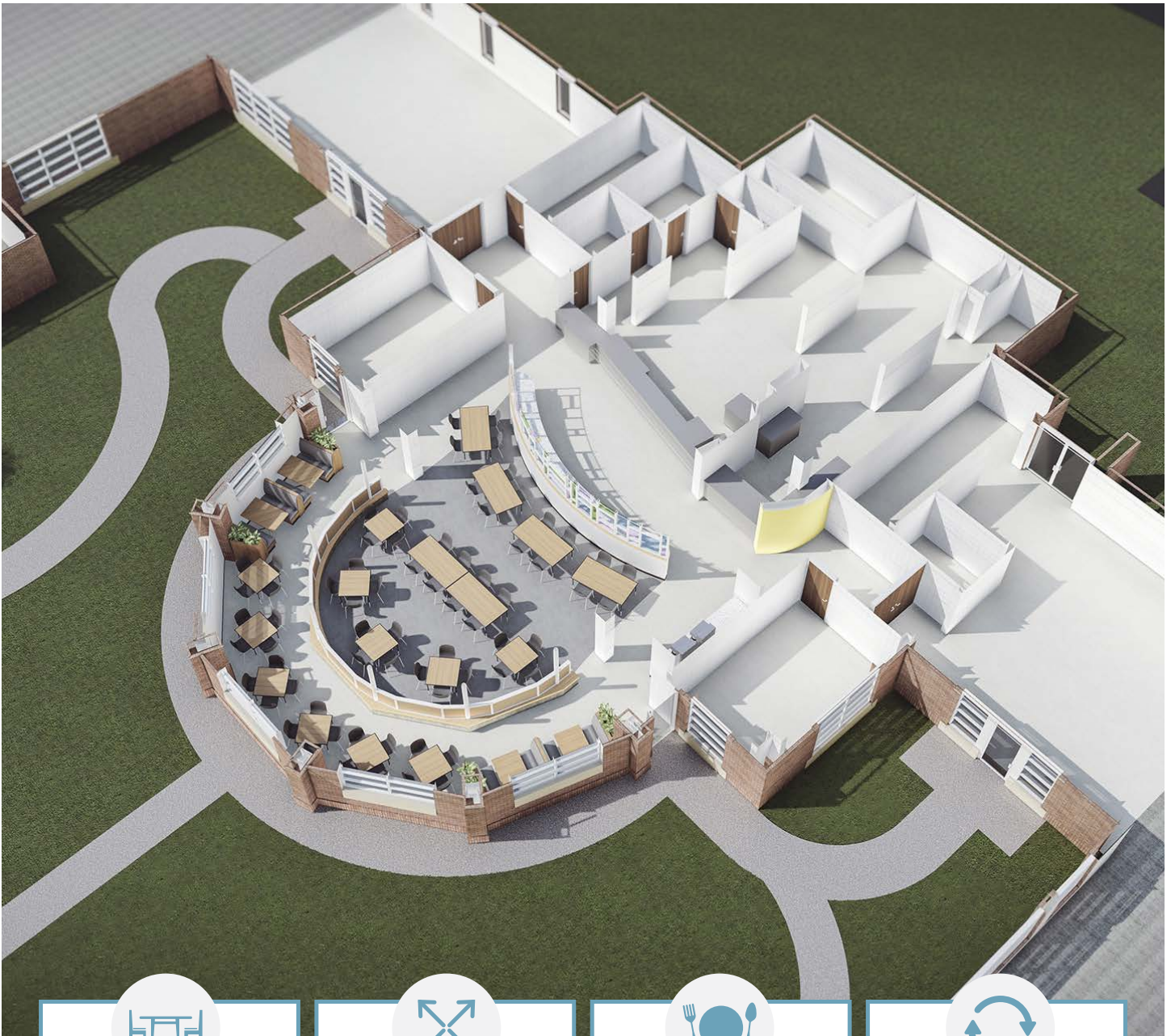
### **Remodel of current space**

- The current center partition will be removed for better line of sight, creating a more open floor plan to increase staff visibility and student independence.
- The cafeteria's aesthetics will also be updated with new, sensory-friendly paint, new tables and booths and additional noise-dampening material.
- The food pick-up area will have a new streamlined design, making the food pick-up process faster by cutting down on congestion and improving visibility for all staff.
- We will move current equipment for student safety and to prevent damages. We will also add new kitchen equipment.

### **Increased storage**

- We are adding a walk-in cooler and walk-in freezer.
- The additional food storage space will cut down the number of deliveries, allowing food service employees to be more efficient with their time and take care of other pressing matters.

**Construction timeline:** five months with cafeteria staying open during the construction



## ADDITIONAL SEATING

Seating will expand from **56** to **84** people. This allows cafeteria staff to feed more classrooms in a shorter period of time, keeping students on a normal, consistent dining schedule.



## ROOM FOR GROWTH

The student population has increased since the building's construction in 1998. To keep up with this increase, we will expand the cafeteria by 838 sq. ft. to **3,270 sq. ft.**



## MORE MEALS SERVED

We've doubled the number of students we serve and increased the number of meals made from 320 a week to **over 1,300** without adding any square footage to accommodate for the growth.



## BETTER FLOW

The current center partition will be removed for **better line of sight**, creating a more open floor plan to increase staff visibility and **student independence.**