



Heartspring



EXPANDING POSSIBILITIES

HEARTSPRING CAMPUS EXPANSION PROJECT

New Group Home • G10



NEW GROUP HOME • G10

The average time a child spends on Heartspring's school waitlist is 141 days. That's 141 days for families to wait in crisis mode. That's more than four and a half months of growth each and every student on the waiting list is missing out on and of parents just hoping they can deal with their child's outbursts and behaviors while keeping everyone in their family safe, knowing their child could be in a place that's safer, a place that can help him or her find his or her independence and become who he or she is meant to be.

Heartspring's residential program is the last hope for many families of children with special needs. Parents and guardians who come to us have exhausted the resources near their homes and are looking for a place that can keep their children safe while helping them grow and build independence. We are filled to capacity and need more space for the children who need our services. We've opened three off-campus homes, but our residential waiting list still remains, and we continue to get new referrals.

The construction of G10 allows us to meet our current

and future space needs. We are designing this home to specifically meet the challenging physical demands our children place on it. We've focused on durability, design and efficiency, taking what we've learned works and what doesn't work in our current homes and incorporating it into the plans for G10. The project will include the structure and furnishings.

Our newest house will be home to 12 additional students, each with his or her own bedroom. In addition to the space, the newest home has an open layout, giving Heartspring staff line of sight of the entire living space, helping to foster independence while ensuring student safety. The new design is extremely compatible with our structured teaching model, which is being used in the classrooms. Each activity of our students' lives has a designated area to foster learning and growth. Even the materials used in the home were chosen with our children in mind. Many of them are soundproof, and, to cut down on future costs, we will use much more durable materials in the construction of this current home to combat the wear-and-tear of daily life. The entire project, including furniture and equipment, will cost \$2,310,000.



NEW GROUP HOME • G10 OVERVIEW

On average, students spend 141 days on the Heartspring school's waitlist. That is too long. To reduce our waitlist and serve more families, Heartspring needs to expand and grow. The construction of our newest home, G10, allows us to meet our current and future space needs. The new space will be designed to specifically meet the challenging physical demands our children place on it with more durable materials and an open-floor plan.

Additional rooms and space to combat long waiting lists

- Heartspring's student population has more than doubled since the current campus opened. We have added three off-campus homes but still have many children on the waitlist.
- The new 9,135 sq. ft. structure will have 12 bedrooms.
- It will be used as a transition home from our current on-campus homes to an off-campus home or to life after Heartspring. Students will build independence, life skills and confidence in this new setting.

Open-Floor Plan

- G10 features a new open floor plan designed to foster student safety and independence. Heartspring staff will have line-of-sight over the entire living, dining and recreation area.
- There are designated areas for different student activities like

leisure, dining, academics and group activities. Having a specific area for each part of a student's home helps promote structured learning, which is being used in the classrooms.

- The new floor plan gives students another type of living environment, creating an opportunity to generalize their skills in a new place.

Designed with needs of our students in mind

- We will cut down on repair costs with furnishings and materials that are more durable and able to withstand aggressive behaviors:
 - Triple-reinforced and waterproof walls
 - Polished concrete floor
 - Walk-in showers with larger tiles to cut down on wear and tear
 - Cupboards built into the structure, which will also help with food stealing
- We've utilized our space by making the storm shelter part of our day-to-day living area. It houses one restroom, an alternative room and has access to the medical room. The layout ensures students and staff have what they need if forced to stay in the storm shelter for an extended period of time.

Construction timeline: eight months

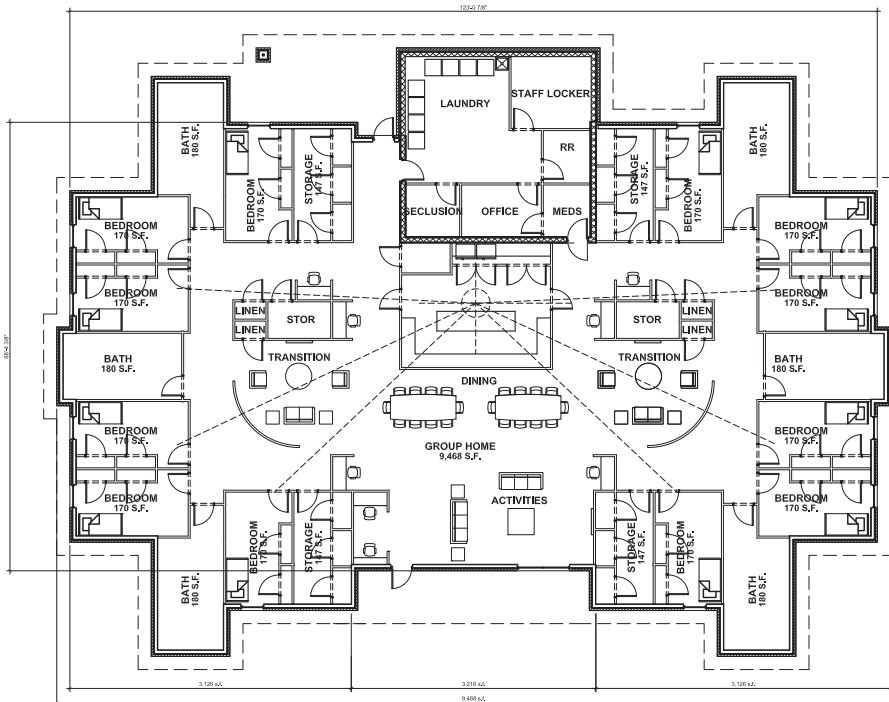


OPEN-FLOOR PLAN

G10 features a new open floor plan designed to foster student safety and independence. Heartspring staff will have line-of-sight over the entire living, dining and recreation area.

MORE BEDROOMS

The new 9,135 sq. ft. structure will have 12 bedrooms.



TRANSITION HOME

G10 will be used as a transition home from our current on-campus homes to an off-campus home or to life after Heartspring. Students will build independence, life skills and confidence in this new setting.

INCREASED DURABILITY

We will cut down on repair costs with furnishings and materials that are more durable and able to withstand aggressive behaviors, including triple-reinforced and waterproof walls and a polished concrete floor.



“

Families that need residential placement are in crisis. Building another home will allow us to lift 12 more families out of that chaos.

Julie Noller, Director of Heartspring School