



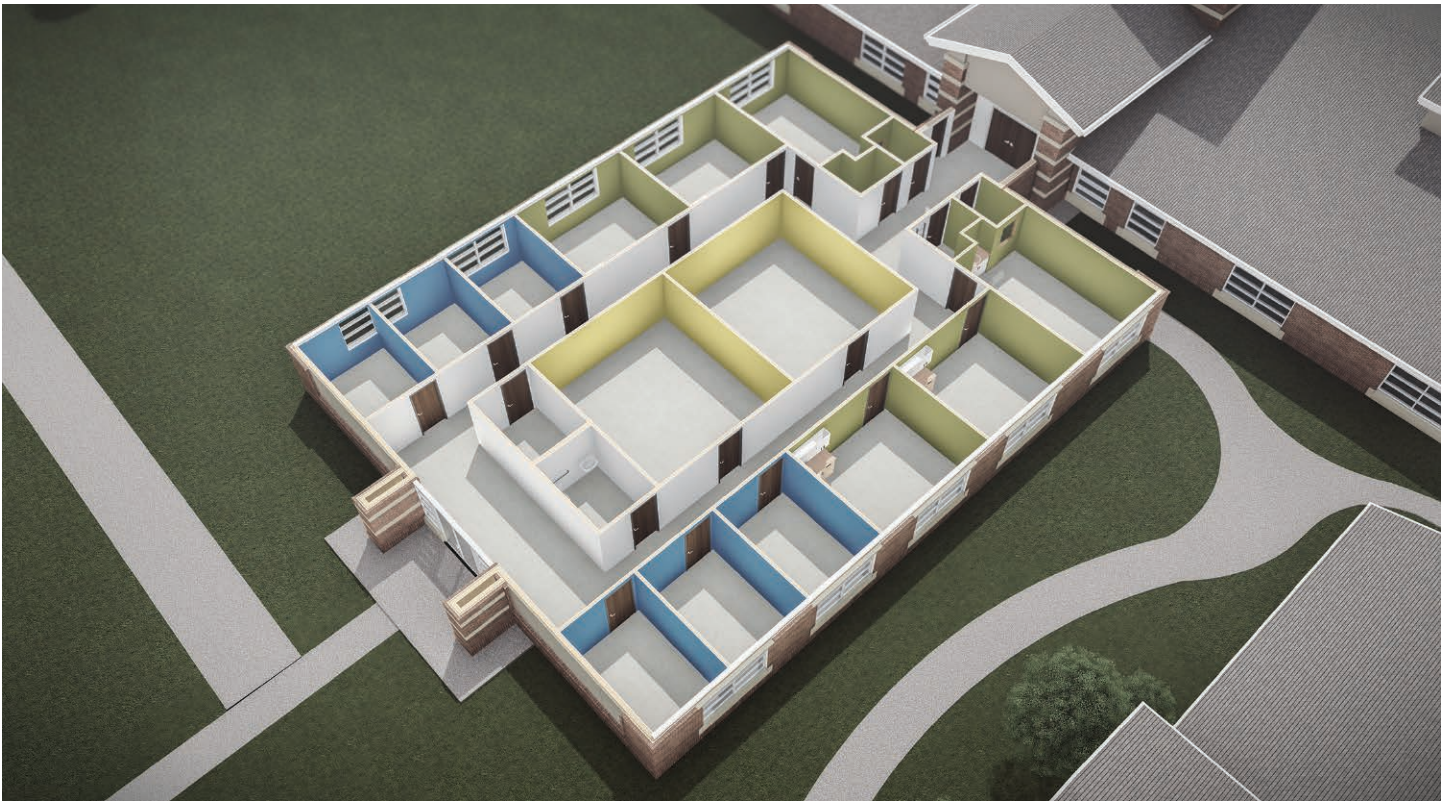
Heartspring



# EXPANDING POSSIBILITIES

HEARTSPRING CAMPUS EXPANSION PROJECT

Pediatric Services / Autism Services Addition



## PEDIATRIC SERVICES / AUTISM SERVICES ADDITION

Imagine being told your child was different than your friend's kids, or your sister's kids or your neighbor's kids. Or that it would take special interventions and treatments you had never even heard of to help your child lead his or her best life. Imagine you were told the sooner you were able to get these services the better, and that time was incredibly important to your child's future. After all of this, imagine you found a place that sounded perfect for your child that you hear recommended time and time again. Then, imagine you learn that it may be months if not years before your child can actually attend.

Many of the families seeking help from Heartspring's Pediatric Services or Autism Services programs have to wait up to two years to be seen by a therapist. That is why we are planning a campus remodel and expansion, so families don't have to go through these hardships. We want to expand and streamline our services to help address the ever-growing need for the therapies and interventions we provide for children.

To meet the needs of the community we need additional space. The remodel and construction will add an additional 5,330 sq. ft. This means we are

able to build more therapy rooms and offices for our team. More space and more clinicians mean we can offer more speech, physical and occupational therapy; psychology services and Applied Behavior Analysis services the children in our community desperately need. Our new therapy rooms will be multi-use rooms that can be utilized by any therapy or service allowing us to maximize our new space and be able to flexibly meet future needs in services.

In addition to addressing our space constraints, the construction will allow our Autism Services team to move into the main building from its temporary space across the street in the conference center. Many of the children we serve require comprehensive services from both the Autism Services and Pediatric Services programs. Combining these programs in the same physical location will increase the necessary collaboration for improved quality of care, conveniently provide families with a single location for services and allow implementation of best practices. By moving programming on campus, we will be able to increase the program capacity by 25 percent. The entire project, with equipment included, will cost \$1,030,000.

# PEDIATRIC SERVICES / AUTISM SERVICES OVERVIEW

---

Families waiting to enroll children in Pediatric Services and Autism Services have to wait up to two years. To address the waitlist and ever-growing need of our services, we are building onto our Pediatric Services building so we can add and streamline services. The addition will allow for additional multiuse therapy rooms and offices. We will also be able to move the Autism Services program into the main building to conveniently provide families with a single location for services and to allow implementation of best practices.

## Expansion

- The expansion and remodel will expand our service area by 5,330 sq. ft. This includes:
  - Six new therapy rooms and six new office spaces.
  - The new office-and-therapy addition also makes it possible for us to convert some current offices into therapy rooms.
  - A new mother's nursing room for the convenience of our families
  - Two additional conference rooms
  - Expanded waiting area
- We will hire more clinicians to address the community's needs.
- The new construction will take place adjacent to our current pediatric services facility. We will remove the fountain and build into the courtyard.
- We will construct the new addition in a way that will make it easy to expand again in the future.

## Multi-Use Therapy Rooms

- Each room was designed with all of our therapy and service areas in mind and will be multi-use, allowing us to be more efficient and more flexible in our scheduling.
- We will add more large classrooms for group therapy classes and group interaction. These social settings are invaluable to the children we serve, allowing them to build important life and social skills.

## Combining Autism Services and Pediatric Services Under One Roof

- Our Autism Services employees and services will move into the Pediatric Services area. This includes programs such as Applied Behavior Analysis, CARE Clubs and therapies.
- Many of the children receive comprehensive services from both Autism Services and Pediatric Services programs. Having both of these programs in the same area provides families with a single location for services.
- Professionals in both areas will be able to increase the necessary collaboration for improved quality of care and allow implementation of best practices. It will also decrease transition between buildings, creating more time for other job responsibilities.
- By moving programming on campus, we will be able to increase the program capacity by 25 percent.

**Construction timeline:** six months